



2012 Review

# Sustainability Report

Located at Pasir Ris Wafer Fab Park



**Systems on Silicon**

**Manufacturing Company Pte Ltd**

# Table of Contents

Table of Figures.....	2
1 SSMC Overview .....	3
1.1 SSMC’s Mother Fab.....	5
1.2 SSMC’s Vision & Mission .....	9
1.3 IMS Policy.....	10
1.4 EHS Committees.....	11
1.5 Green Product Commitment.....	12
1.6 Smart and Green Chips .....	13
2 Our Green Journey .....	14
2.1 Business Excellence Journey .....	14
2.2 Green Innovation Journey.....	16
3 Our Sustainability Commitment .....	17
3.1 SSMC’s Environmental Preservation Activities .....	17
3.2 Air Cleaning System .....	18
3.3 Wastewater Treatment.....	19
3.4 EcoVision Programs.....	20
3.5 Energy Saving Projects .....	22
3.6 Water Saving Projects .....	24
3.7 Green House Gases Reduction.....	26
4 Environmental Highlights.....	27
4.1 Making a Difference in SSMC.....	27
4.2 Reaching Out Beyond SSMC.....	33
5 Responsible Corporate Citizen.....	38
6 Our Journey Ahead .....	40

# Table of Figures

Figure 1: Overview of SSMC..... 3

Figure 2: Manufacturing Process Overview ..... 4

Figure 3: SSMC’s Vision & Mission ..... 9

Figure 4: EHS Steering Committee ..... 11

Figure 5: SSMC Green Chips enables bulbs to be remotely controlled via Smartphone..... 13

Figure 6: Business Excellence Journey ..... 14

Figure 7: Environmental Achievements..... 15

Figure 8: SSMC Clean Technology for Environmental Preservation ..... 17

Figure 9: VOC Abatement System..... 18

Figure 10: Wastewater Treatment Plant ..... 19

Figure 11: An Overview of Realized Savings and Reductions ..... 20

Figure 12: SSMC EcoVision Targets (2011 to 2014) ..... 21

Figure 13: Optimizing Chilled Water system for energy consumption reduction ..... 22

Figure 14: An Overview of FAB Building ..... 23

Figure 15: First-in-the-World Water Recycling System..... 25

Figure 16: PFC Reduction Projects ..... 26

Figure 17: Educational Visits by SSMC Environmental Committee ..... 27

Figure 18: Green Programs within SSMC..... 30

Figure 19: Recycling Programs within & beyond SSMC..... 32

Figure 20: Programs with Adopted Schools..... 34

Figure 21: Programs with Communities ..... 35

Figure 22: Adoption of Lorong Halus Wetland from PUB ..... 36

Figure 23: Programs with Children of SSMC Employees' ..... 37

Figure 24: Responsible Corporate Citizen ..... 38

Figure 25: SSMC's CSR Programs ..... 39

# 1 SSMC Overview

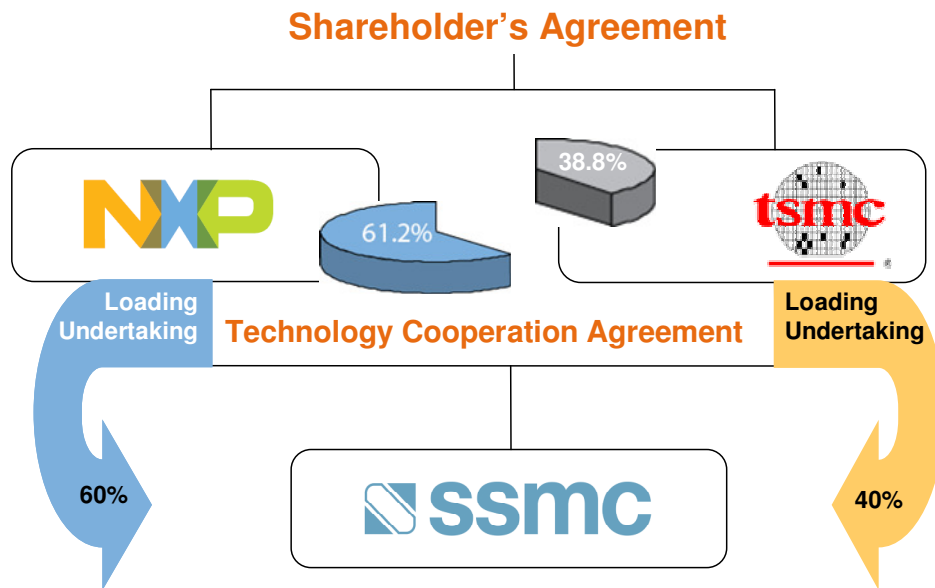


Figure 1: Overview of SSMC

SSMC is constituted as a wafer foundry for NXP and TSMC, chartered to produce deep sub-micron processes systems-on-chip silicon. The core business of SSMC as a CMOS silicon foundry is wafer fabrication and providing exclusive foundry manufacturing services to our partners - NXP and TSMC.

SSMC's belief in quality in all aspects of our business has been translated to dedicated employees working together to offer to customers the highest quality CMOS wafer fabrication. We offer 0.25-micron to 0.11-micron with logic derivatives and embedded flash CMOS manufacturing process. Key device features include dual gate oxide, low leakage, high speed, low power, mixed mode and embedded flash for High Performance Mixed Signal (HPMS) products. Various options are available for each of these nodes, for example polyimide coating for stress relief, thick top metal for power management and inductors,

redistribution layer for bumping packaging process and high resistivity substrate for noise suppression and RF applications.

We serve a wide range of market segments, in the areas of consumer, communication and computing. Our specialty wafers are customized to support a variety of niche electronic products such as green electronics, smart chips, automotive, industrial, healthcare medical and mobile communication devices.



Figure 2: Manufacturing Process Overview

## 1.1 SSMC's Mother Fab

### NXP

---



NXP is a global semiconductor company with operations in more than 25 countries, NXP posted revenue of \$4.4 billion in 2010. It provides High Performance Mixed Signal and Standard Product solutions that leverage its leading RF, Analog, Power Management, Interface, Security and Digital Processing expertise. These are used in a wide range of automotive, identification, wireless infrastructure, lighting, industrial, mobile, consumer and computing applications.

NXP recognizes its corporate social responsibilities as a part of the way it conducts business, the way it manages the company and the way it interacts with society at large. Sitting in World Semiconductor Council, NXP is dedicated in reduction of Greenhouse gas emission through PFC consumption reduction, phasing out of substances of concerns, and overall environmental performance by setting goals in energy, water, waste and hazardous substances aspects. Certified in ISO 14001, NXP also puts green products, social engagement and employees' health and well-being as key focuses.

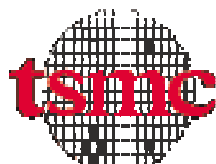
## NXP's Sustainability Policy

---

Culture	NXP fosters a culture of sustainable entrepreneurship, built on its company values; raising the bar, engaging curiosity, taking initiative, working together and develop deep core competence for excellence.
Legislation	NXP actively seeks compliance with all applicable legislation, regulations, and codes of practice, and whenever possible and practical, goes beyond specified standards.
Ethics	NXP implements business practices according to defined codes of conduct within the company, its global supply chain, and across the industry as a whole.
Products	NXP is committed to creating products and packages that are safe to use, and ensures that, with each new generation, the environment impact of their use and disposal is further reduced.
Employees	NXP employs a diverse workforce and invests in its people, creating a workplace where employees can reach their full potential in an environment that is healthy, safe, and free of occupational injury and illness.
Environment	NXP conserves natural resources and reduced the environmental impact of its waste generation and its emissions to the air, water, and land.
Society	NXP believes education is essential to making the world a better place, and uses educational programs to improve people's lives and prepare the next generation for tomorrow's challenges.
Transparency	NXP sets targets for, measures, and verifies its sustainability performance, and publishes the results.
Dialogue	NXP engages in open, ongoing dialogues with employees, customers, investors, the public, and other key shareholders to continuously improve its sustainability performance.

## Taiwan Semiconductor Manufacturing Company

---



TSMC is established in 1987, being the world's first dedicated semiconductor foundry. It operates three advanced 12-inch wafer fabs, four eight-inch wafer fabs, and one six-inch wafer fab in Taiwan. TSMC also manages two eight-inch fabs at wholly owned subsidiaries: WaferTech in the United States, TSMC China Company Limited and its joint venture 8" fab SSMC in Singapore. It was listed on the Taiwan Stock Exchange (TWSE) under ticker number 2330, and its American Depositary Shares trade on the New York Stock Exchange (NYSE) under the symbol "TSM".

TSMC's strategies to achieve its environmental goals are to comply with regulations, strengthen recycling and pollution prevention, manage environmental risks, instill an environmental culture, build a green supply chain, and fulfill our corporate social responsibilities. TSMC commits to achieving and continually improving the following:

1. Meeting or surpassing international ESH regulations, standards and commitments;
2. Establishing a safe working environment, preventing occupational injury and illness, and keeping employees healthy;
3. Enhancing green design and green manufacturing, providing green products and green services as well as constructing green fab buildings in an environmentally sound manner;
4. Staying abreast of global ESH issues, evaluating risks, and taking effective risk management measures;



5. Enhancing every employee’s awareness of and sense of accountability for ESH, and building an ESH culture;
6. Establishing a green supply chain and enhancing ESH performance with suppliers through experience sharing and collaboration;
7. Strengthening communication with stakeholders, actively disclosing and sharing ESH information and experience, and encouraging improvements in industrial safety, hygiene and the environment.



*“TSMC firmly believes that a corporation’s social responsibility is to be a force for positive changes in society. Our efforts in the five dimensions of “morals, business ethics, economy, rule of law, and environmental protection” act as a stabilizing force in society and in turn inspire others to follow, bringing progress to society.”*

*- Message from Morris Chang, TSMC’s Chairman and CEO*

## 1.2 SSMC's Vision & Mission



**VISION**  
Going the extra mile to be the preferred source of advanced semiconductor wafers

**MISSION**  
To deliver best-in-class foundry services

Figure 3: SSMC's Vision & Mission

## 1.3 IMS Policy

SSMC's IMS (Integrated Management System) Policy incorporates and governs the Quality, Environment, Health & Safety, Information Security Management systems as well as Business Continuity Management.

*We are committed to continually improve and innovate our processes and systems to deliver best-in-class foundry services to all our customers.*

---

### We shall ...

- Strive to do the right thing right the first time, every time.
- Develop people fully to maximize their potential.
- Build partnership with customers and suppliers.
- Assure business continuity, confidentiality, integrity and availability of information assets.
- Ensure occupational health & safety aspects of personnel, materials, and equipment at our workplace.
- Conserve energy, water, and natural resources to preserve the environment & provide hazardous substance free products.
- Contribute to our community at large as an exemplary corporate citizen.
- Comply with all applicable legislation & regulations and requirements of international standards.

## 1.4 EHS Committees

In SSMC, environment, health and safety matters are escalated to top management (Management Team members) during EHS Steering Committee meetings which are held on a quarterly basis. Supporting this committee, there are two sub-committees at working level to follow up the matters.

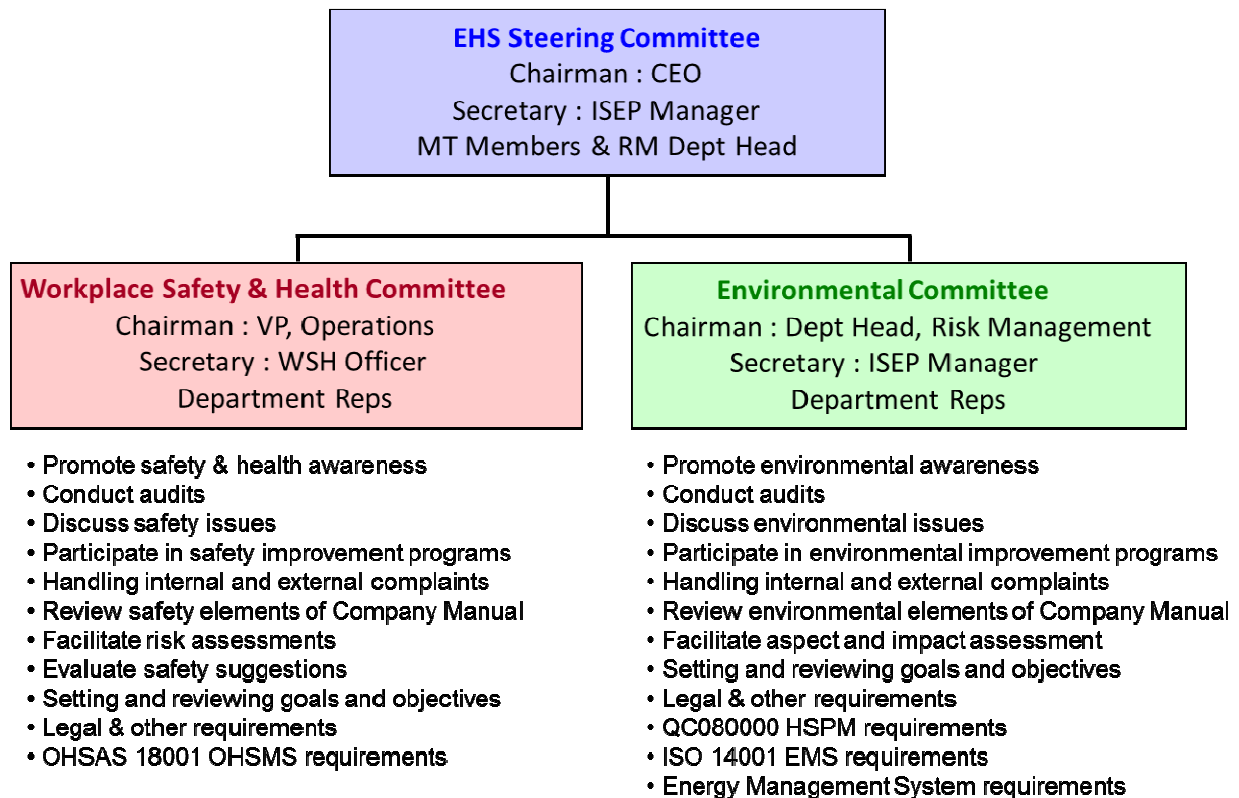


Figure 4: EHS Steering Committee

## 1.5 Green Product Commitment

### Elimination and restriction on use of hazardous substances

---

Many processes used to manufacture semiconductors are complex and delicate, and require a variety of specialized chemicals and materials. To protect our employees and the environment, SSMC has several programs in place that regulate our use of hazardous chemicals or “substances of concern”.

We follow some of the toughest practical standards in the industry by being certified in QC080000 Hazardous Substance Process Management, which is compliant to legal requirements, RoHS, Joint Industry Guide and customers’ requirements. The annual finished product testing by third-party accredited laboratory confirms the non-existence of the hazardous substances in our products. SSMC also works with suppliers for the screening the hazardous substances in the incoming materials. Our annual Green Procurement Survey reaches all raw material suppliers to ensure only hazardous substance free materials are supplied to SSMC.



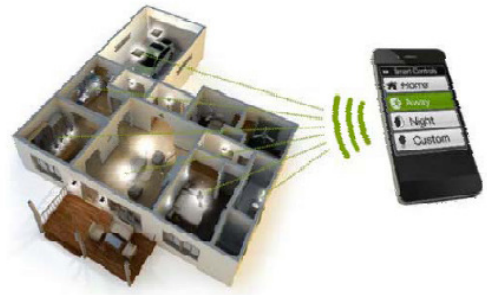
## 1.6 Smart and Green Chips

SSMC is going green with Smart and Green-chip applications wafer manufacturing, as we are innovating a smarter and greener way of living with HPMS technology.

Market demand for greater levels of energy efficiency; higher level of integration, increasing silicon content and fast LED penetration in Display backlight are the key driving forces for green electronics chips production. Since 2009, SSMC has been supporting its customers using high voltage, power management processes in delivering the green chips to the world.

Specialized wafers produced from these processes are customized to fit then niche requirement for enabling a sustainable way of living:

- Energy-efficient solid state lightings
- Power-consumption-efficient
- Compact fluorescent lamps
- Wireless interface products
- Ultra low power solutions
- Sensor (MIST)
- Micro controllers
- Smart home
- Green interface automotive electronics
- eMetering monitoring system



**Figure 5: SSMC Green Chips enables bulbs to be remotely controlled via Smartphone**

## 2 Our Green Journey

### 2.1 Business Excellence Journey

SSMC has never stopped to strive for business excellence through continuous improvements in all business aspects. The pyramid and certificates below demonstrates SSMC’s “to-do-better” spirit in our business excellence journey since the factory’s start-up.

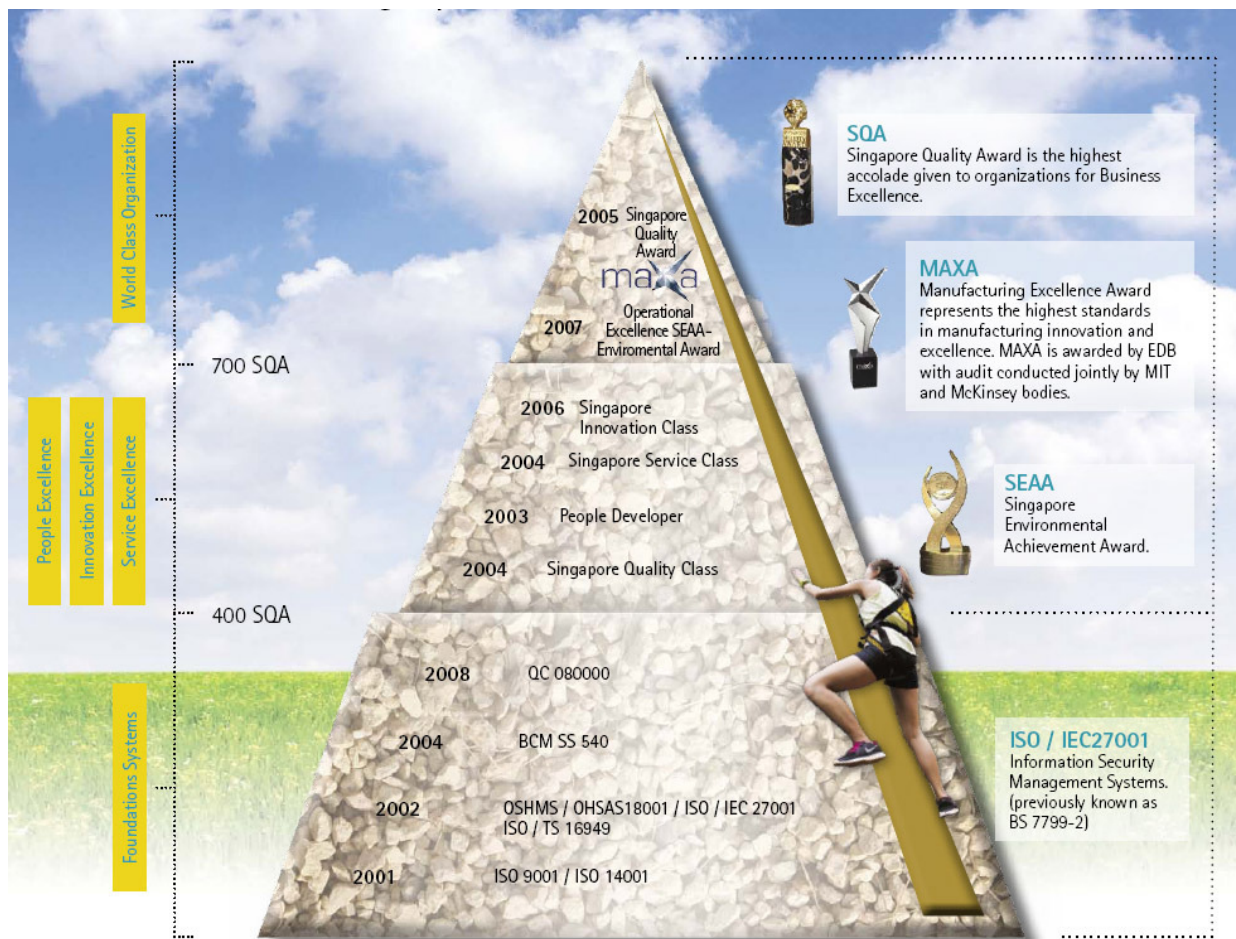


Figure 6: Business Excellence Journey



Since 2001  
ISO 14001 Certification



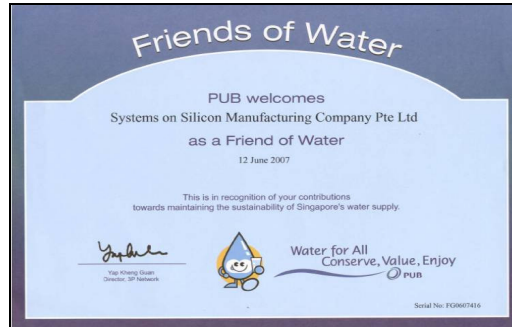
Since 2002  
Sony Green Partner



Since 2008  
QC080000 Certification



2006  
Singapore Environment Achievement Award



2007 & 2012  
PUB Friends of Water



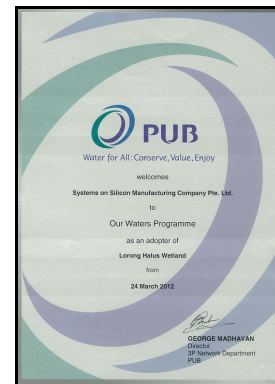
2009  
Canon Green Activity



2010  
Gold Certificate of Sustained Partnership for NEA's Corporate and School Partnership



2012  
Certificate of Appreciation for contribution towards Singapore International Water Week



2012  
Adoption of Lorong Halus Wetland from PUB

Figure 7: Environmental Achievements



## 2.2 Green Innovation Journey

### Being the First in Singapore Semiconductor Industry

---

SSMC has always kept the innovative spirit in our mind and dared to be the first to gain the best advantage in forefront technology advancements. We are the **first wafer fab in Singapore that worked with PUB to use 100% NEWater for wafer processing as early as 2003**. This move also earned the industry's confidence in NEWater and SSMC was awarded the PUB's "Friend of Water" Certificate and various recognitions.

To always stay ahead of the games, SSMC has also benchmarked its technology in environmental conservation with world-class companies from time to time. Though not legally required in Singapore, SSMC has invested millions in air cleaning system by installing Volatile Organic Compound (VOC) abatement system and replacing high Global Warming Potential (GWP) gas with a lower one for less Carbon Dioxide emission.



# 3 Our Sustainability Commitment

## 3.1 SSMC's Environmental Preservation Activities

SSMC has carefully evaluated the impacts to the environment for all of our industrial activities. We firmly believe to minimize the environmental impacts while succeeding in business and SSMC has adopted a holistic approach for treatment of waste, gas and chemical for making itself an eco-friendly facility. Our waste treatment system has been designed to treat all environmental aspects and recycling system has been made possible before the last-stage wastes are disposed to offsite treatment by licensed waste collectors.

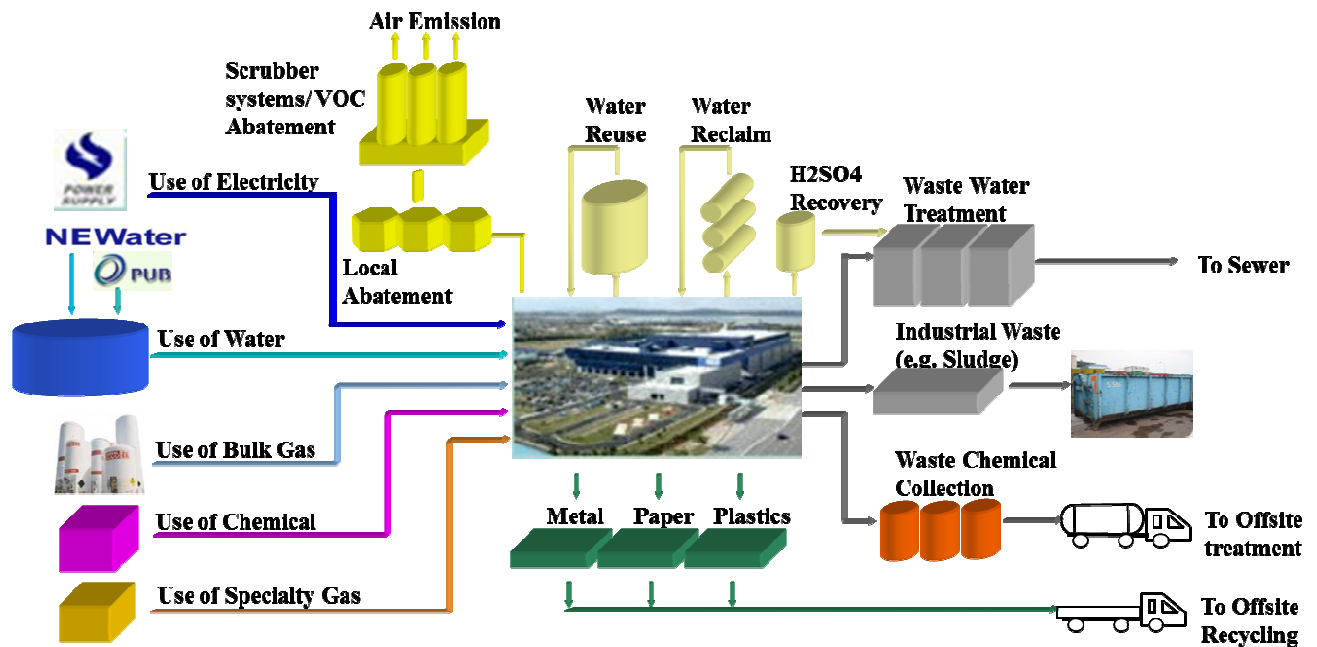


Figure 8: SSMC Clean Technology for Environmental Preservation

## 3.2 Air Cleaning System

### Volatile Organic Compounds (VOC) Abatement System

VOCs used in wafer fabrication processes have the potential to generate smell due to its nature. Though not legally required in Singapore, SSMC has gone an extra mile to invest in millions to install and maintain VOC abatement system as a socially responsible corporate citizen.

The abatement system, which took SSMC more than USD 3 million to build up and more than USD 600,000 a year to operate, is able to treat the VOC generated by manufacturing processes with an optimum efficiency rate.

Stack air emission monitoring is conducted on an annual basis by a third-party accredited laboratory and SSMC has been consistently complying with all Singapore air emission legislations.

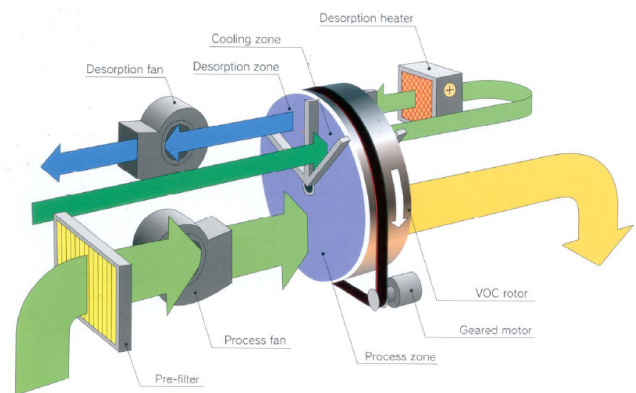


Figure 9: VOC Abatement System

### 3.3 Wastewater Treatment

#### Wastewater is treated before discharge

---

Wastewater (trade effluent) in SSMC is treated before discharged to the public sewer. The treatment system is built with redundancy as a contingency plan to ensure all wastewaters are treated at all times before discharging to public sewer. The quality of the wastewater is confirmed by an analysis report from third-party accredited laboratory on a quarterly basis to ensure all legal compliances are fully met.



Figure 10: Wastewater Treatment Plant

### 3.4 EcoVision Programs

#### Making a Difference (2003 to 2012)

SSMC started performance tracking as early as Year 2002. Riding on NXP’s programs, SSMC has realized savings and reductions over a span of more than 10 years. As the operation capacity has expanded over the years, SSMC adopted NXP’s performance indicator and measured absolute consumptions against the number of wafer out and the layers of each wafer. The following charts show a consistent downward trend of reduction and ways surpassing the targets set in energy consumption, water consumption, and waste generation. These are results of conscious effort to be “environmental friendly”.


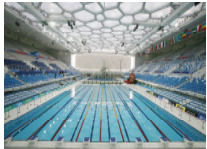

Parameters	2003 - 2012 Realized Savings and Reductions
<b>1. Energy</b> 	Total saving of <b>17,000,000 kWh</b> of electricity, equivalent to <b>3600 4-room HDB flat annual electricity consumption</b> .
<b>2. Water</b> 	Total saving of <b>1,000,000 m3</b> of water, equivalent to <b>400 Olympic size swimming pool</b> .
<b>3. Waste</b> 	Total reduction of <b>232,000 tons</b> of waste.

Figure 11: An Overview of Realized Savings and Reductions

## SSMC's Environment Action Program (2011 to 2014)

---

SSMC follows closely with NXP's environmental action program – the EcoVision for a holistic environment management system, ranging from Energy, Water, Waste, Substances of Concern and CO<sub>2</sub> emission. The targets are reviewed every 5 years for continuous improvements since the year of 2002. Figure below specifies the details of the improvements to be achieved by 2014.

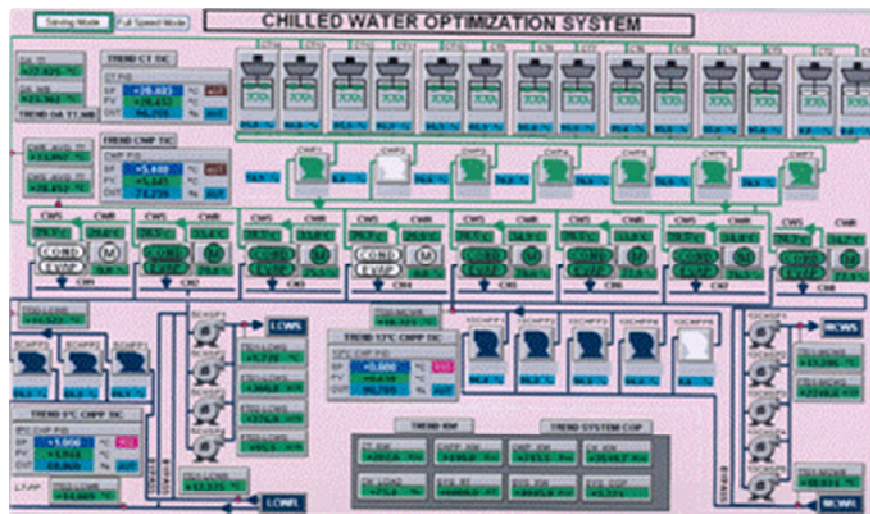
<b>SSMC Environmental Action Program (EcoVision targets) 2011 – 2014 (Reference year 2010)</b>	
<b>Global Warming (CO<sub>2</sub> Emission)</b>	– CO <sub>2</sub> emission by PFC consumption to be reduced 143 kiloton CO <sub>2</sub> equivalent by 2014
<b>Energy</b>	– 3% normalised reduction by 2014
<b>Water</b>	– 12% normalised reduction by 2014
<b>Waste</b>	– Maintain performance in absolute waste (excluding one-time waste) amount of 2010
<b>Substances of Concern</b>	Phase out of all non-critical hazardous and restricted substance use in products and manufacturing
	– Complete phase out of 1,2 dimethoxyethane by 2014
	– Phase out of all non-critical NMP uses by 2016
	– Phase out of all non-critical uses PFAS and PFOA by 2018
	– Phase out of all non-critical uses Xylene, Methylene and Toluene by 2018
	– Complete phase out of all ODP refrigerant uses by 2020

Figure 12: SSMC EcoVision Targets (2011 to 2014)

### 3.5 Energy Saving Projects

#### Energy Efficient Chilled Water System

SSMC has invested USD800,000 to achieve more than 10% energy reduction for the chilled water system by installing variable speed drives to all pumps, cooling towers, and condenser water pumps to optimize energy consumptions. Below figure illustrate the system set-up after the improvements have been done. With this improvement project, SSMC’s chiller plant is able to achieve a higher ASHRAE rating of excellent, with a reduction of 0.11 KW/Ton in energy consumption.



Comparison of SSMC chiller Plant with ASHRAE Rating

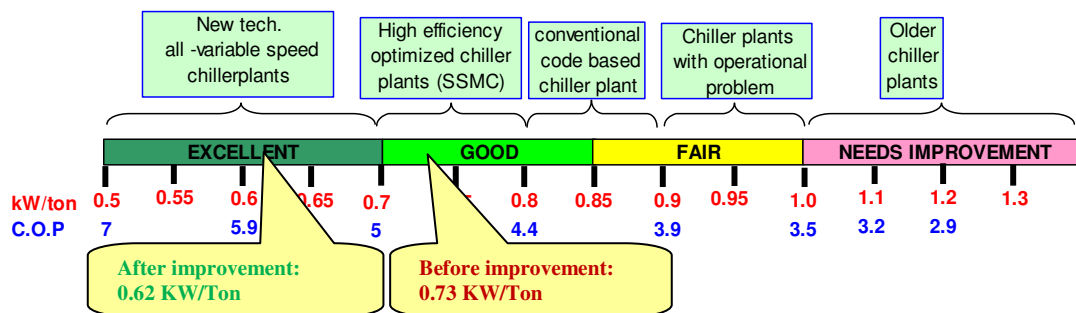


Figure 13: Optimizing Chilled Water system for energy consumption reduction

## Cleanroom Pressure Reduction

---

Cleanroom, where all the wafers are fabricated under a controlled level of contamination, humidity, air change, pressure and temperature, makes a significant contribution to total energy consumption. With careful monitoring and benchmarking with NXP and TSMC, SSMC was able to reduce the Cleanroom pressure by 36% in 2005, and further reduced by another 22% in 2011. The total annual energy reduction for this project amounts to more than 3,000,000 kilowatts.

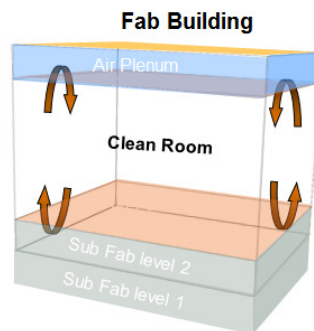


Figure 14: An Overview of FAB Building

## Energy Management System

---

In 2013, SSMC has stepped up on energy savings in line with Singapore's Energy Conservation Act 2012. The management strongly believes that with the implementation of Energy Management System, SSMC's energy savings will be able to surpass what is required by the legislations.



## 3.6 Water Saving Projects

### Recycling of Wastewater from Local Scrubber Cleaning

---

SSMC built local scrubber systems to treat our exhaust gases before discharging them directly to the environment. One of the systems uses water to scrub the gases. In February 2012, SSMC has successfully built and commissioned a new water plant to recycle the wastewater after scrubbing the exhaust gases. During the finalization stage of design, the system was further optimized due to the higher purity of NEWater. With partial funding from PUB's Water Efficiency Fund, the result is a first-in-the-world design and more cost effective in building facilities and utility maintenance.

The system has run smoothly for a few months and has successfully helped SSMC to **Recycle** (1 Olympic-Swimming-Pool quantity), **Reuse** (1.2 million liters of water), and **Reduce** (950,000 liters PUB water intake & 830,000 liters water released to drain) every day. The daily reduction in water consumption is equivalent to what 1,500 household (4-room flat) consume every day. SSMC thus gains additional 11% of total water recycling rate and reduced NEWater consumption by up to 20%.

By improving the water recycling rate, the plant's implementation not only perfectly reflects SSMC's, it also set an example for the industry in considering the water conservation in this resource-scare city.



**Figure 15: First-in-the-World Water Recycling System**

*“Water conservation work is not seen as a cost to SSMC, with greatest incentive of partnership with PUB towards sustainable development, it is our belief to fulfill our commitment to give back to society.”*

**- Mr Jagadish CV, CEO of SSMC**

## 3.7 Green House Gases Reduction

### Perfluorocarbons (PFC) Reduction Projects

Though semiconductor manufacturing is not considered a significant contributor to global warming, the industry does emit some greenhouse gases as a result of the manufacturing process. Being proactive in addressing the sustainability responsibilities, SSMC has stepped up for implementations on various improvement opportunities to reduce CO<sub>2</sub> emissions.

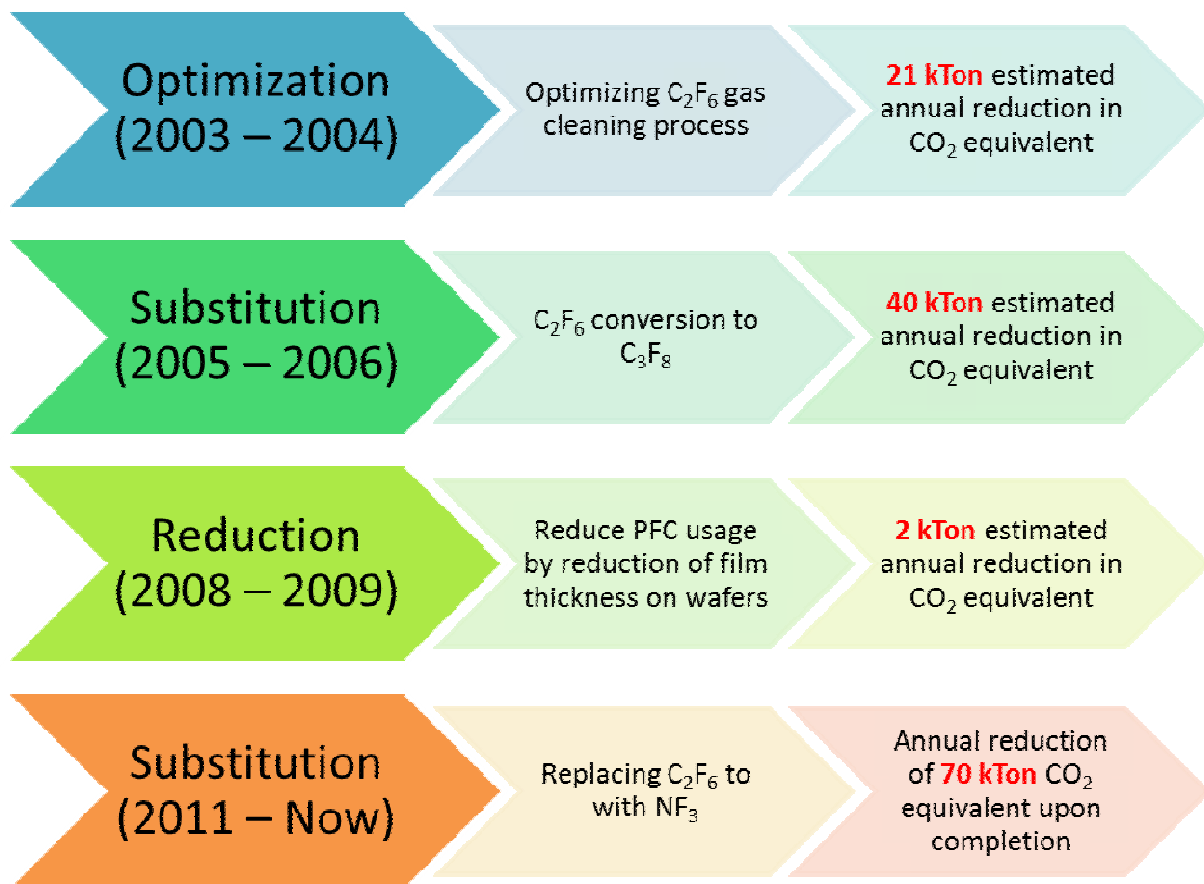


Figure 16: PFC Reduction Projects

## 4 Environmental Highlights

### 4.1 Making a Difference in SSMC

#### Educational Visits for Staffs and Families

---

SSMC Environmental Committee has organized various trips for staffs and their families to understand the environmental efforts made by Singapore government and other organizations. By inviting the family members to join the trips, SSMC provides the opportunities for the family to bond and to instill the sense of environmental conservation to the next generation. Over the years, places SSMC staffs had visited include NEWater Visitor Centre, Marina Barrage, Tuas Incineration Plant, Pulau Semakau and Lorong Halus Wetland.



SSMC staffs at NEWater Visitor Centre



SSMC staffs and families at Marina Barrage Visitor Centre

Figure 17: Educational Visits by SSMC Environmental Committee

## Green Programs within SSMC

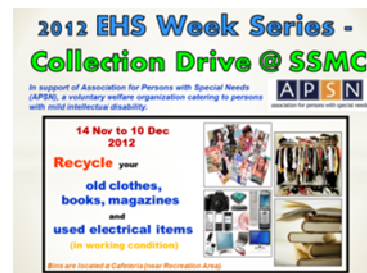
---

Within SSMC, the staffs are encouraged to adopt an environmental friendly approach in our workplace. Green Programs initiated by SSMC Environmental Committee has changed many staffs' daily habits to reduce their carbon footprints – Bring Your Own Bag & Use Your Own Mug, recycling of old clothing & books, newspaper collection drives, sales of potted plants, screening of environment movies, SSMC Car Free Day, lights off during Earth Hour, as well as other exhibitions and quizzes.

In 2012, when World Wide Fund for Nature (WWF) initiated the drives for an environmentally-responsible dining policy, SSMC took leadership by taking a corporate pledge to be “shark fin free” in all corporate dining occasions for a healthy marine ecosystem. At the same time, SSMC also encouraged the employees to take a personal pledge to prevent unsustainable fishing of sharks.



SSMC's Bring Your Own Bag



Recycling of old clothing, books and electronic devices and donating to the needs

1 year usage of SSMC paper cups → 66 Trees of wood consumption



**Use Your Own Mug!**  
Save the trees, Save the Earth!




Removal of paper cups in pantries and distribution of SSMC Mug to all staffs

Safety and Green Promotion – Exhibition in SSMC Cafeteria



Sales of potted plants in SSMC Cafeteria to promote greenery in office

SSMC CEO supporting Car Free Day by cycling to office

**Environmental Movie Screening**

**an inconvenient truth**  
the crisis of global warming  
**AL GORE**

A 94-minute 2006 documentary film about former United States Vice President Al Gore's campaign to educate citizens about global warming via a comprehensive slide show.

"I've been trying to tell this story for a long time and I feel as if I've failed to get the message across."

Join us @ SSMC Auditorium on  
**24 June 2011 (Friday) @ 1200 hrs**  
Set lunch and drinks will be provided for those who registered

Brought to You by SSMC Environmental Committee



Screening of environmental movie – “An Inconvenient Truth”

Lights off during Earth Hour at office and car park



## Corporate Pledge

These organisations have taken the first step towards an environmentally-responsible dining policy by pledging to remove shark fin from corporate functions. We thank them for taking leadership in such a critical issue.

- Aamor Pte Ltd
- ASM Front-End Manufacturing Singapore Pte Ltd
- British High Commission in Singapore
- Credit Suisse AG (Asia Pacific)
- Dentsu Mobius Pte. Ltd.
- Deutsche Bank
- Ere-S Pte. Ltd.
- ESSECAAsian Center
- EV World Pte Ltd
- Jebsen & Jessen Group of Companies South East Asia
- SingTel
- **Systems on Silicon Manufacturing Co. Pte. Ltd. (SSMC)**
- Vermont Woods Studio



SSMC being one of the 13 organizations to pledge for **Shark Fin Free** corporate dining policy

Figure 18: Green Programs within SSMC

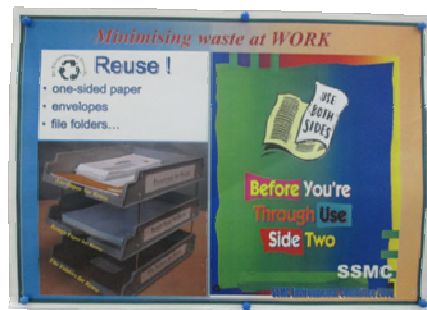
## Recycling Programs

---

In line with NXP's EcoVision program, SSMC has initiated recycling programs ranging from process chemicals and gases, scrap wafers to paper and cartridges. SSMC even went beyond our own premises to collaborate with our vendors on recycling of packaging materials and chemical canisters by sending back the empty packaging materials.



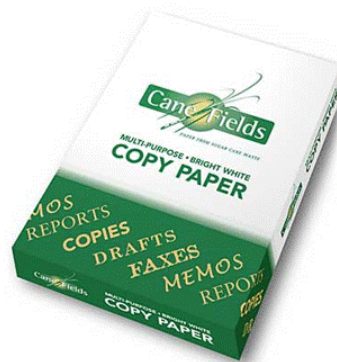
Recycling of packaging boxes with suppliers



Default double printing for all printers



Recycling bins made available in SSMC



Replacing all paper to sugar cane paper





Recycling of toner cartridges and paper waste

Recycling of H<sub>2</sub>SO<sub>4</sub> for exhaust treatment

Figure 19: Recycling Programs within & beyond SSMC

## 4.2 Reaching Out Beyond SSMC

### NEA's Corporate and Schools Partnership (Adopted Schools)

---

In respect of contribution to community and society, SSMC has reached out to our adopted schools – Siglap Secondary School and Meridian Junior College, through NEA Corporate and Schools Partnership (CASP) Program. 2013 marks the 10<sup>th</sup> year of the collaboration with the schools and SSMC is proud to be one of the 6 organizations that joined this program since its beginning in 2004. In 2012, SSMC decided to adopt Park View Primary School as well so as to garner immense collaboration opportunities for our mutual interest in environmental protection.



Educational visit to Pulau Semakau with Siglap Secondary School



Beach Cleanup with  
Siglap Secondary School



Siglap Secondary School's exhibition booth  
at Clean and Green Carnival



Environment drawing competition with Meridian JC and students from primary schools in Pasir Ris area during beach cleanup. A total of **138 kg** of wastes collected.



Newspaper collection drive at nearby HDB blocks with Meridian Junior College and Park View Primary School. A total of **1.1 tons** of newspaper collected.

**Figure 20: Programs with Adopted Schools**

## Community

---

Not limiting SSMC's environmental efforts to the three adopted schools, in the respect of contribution to community and society, SSMC has reached out to a bigger crowd by organizing factory visits to primary school students from Pasir Ris area and sponsoring the mapping of Pasir Ris Park. To further our outreach to public and industries, SSMC's CEO, Mr. Jagadish has accepted the invitations to be the keynote speaker at 2010 Singapore Green Summit to share SSMC's views on environmental conservation and outreach programs with other industrial partners.



Factory Visit for students and teachers from 4 primary schools in Pasir Ris area



Workshop with Meridian JC for Meridian Primary students – using waste packaging materials from SSMC to build structures



SSMC CEO presenting at 2010 Singapore Green Summit



Mapping of Pasir Ris Park with Meridian Junior College

**Figure 21: Programs with Communities**

SSMC's adoption of Lorong Halus Wetland from Public Utilities Board's Active, Beautiful and Clean Water Program marked another SSMC's strong commitment to environmental conservation. With this adoption, SSMC is able to utilize this greenery as a means to share the green efforts to other industrial partners and the communities. Staffs from Changi Airport Group and Soitec were among first industrial partners who received a guided tour by SSMC green volunteers.



SSMC receiving Certificate of Adoption of Lorong Halus Wetland from DPM Teo



SSMC receiving Certificate of Appreciation for contributions towards Singapore International Water Week 2012



Learning Trail @ Lorong Halus conducted by SSMC volunteers for publics during Singapore International Water Week 2012



Learning Trail @ Lorong Halus conducted for Changi Airport Group and Soitec staffs

Figure 22: Adoption of Lorong Halus Wetland from PUB

## Our Future Generation

As part of SSMC’s efforts to reach to the families, SSMC is determined to pass on the environmental protection messages to the next generation by organizing environment drawing competition to invite the children of SSMC employees’ to join the campaign to raise the awareness in environmental conservation in and out of SSMC. All participating children will be invited to the award presentation and the winning entries will be included the SSMC calendars. The program started in 2008 and till now SSMC calendar has become a tradition for the children to showcase their talents in environment conservation awareness.



SSMC Environmental Calendars



Award presentation cum celebration party for children of SSMC employees’ who participated in the drawing competition

Figure 23: Programs with Children of SSMC Employees'

## 5 Responsible Corporate Citizen

Not only limiting our successful stories with environmental aspects, SSMC has extended its corporate responsibilities to other arenas like national business continuity management program, bizSafe promotions with vendors and emergency preparedness with Singapore Police and SCDF. Below figure is just an example on the programs SSMC has achieved with various organizations.

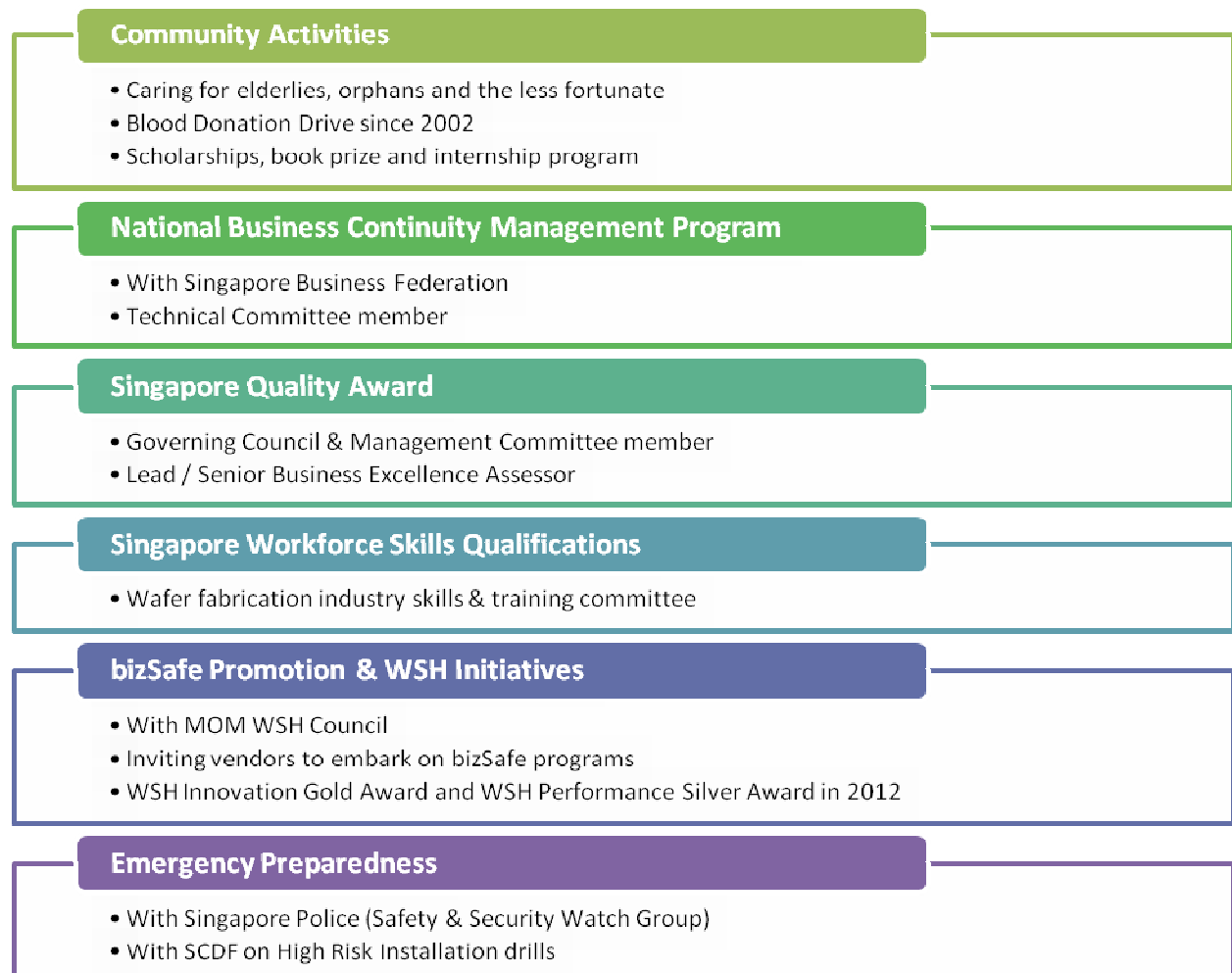


Figure 24: Responsible Corporate Citizen



Charity to Myanmar & Sichuan (earthquake relief fund donation)



Mobile message by Singapore Association of Visually Handicapped



“Adopt a Wish” program with Orphanage in Batam



Donation and visits to old folks’ home



bizSafe promotion and pledge with WSH Council and SSMC vendors



Blood Donation Drive since 2002

**Emerging Unscathed from the Japan Earthquake and Tsunami** ( Policy )

(Systems on Silicon Manufacturing Company Pte. Ltd.)

When news of the massive 9.0-magnitude earthquake and subsequent tsunami which struck Japan reached the Business Continuity Management Team of Systems on Silicon Manufacturing Company Pte. Ltd. (SSMC), the team immediately responded by holding an emergency meeting and triggering its Business Continuity Plans (BCP) on the very evening of the disaster. The annual company-wide “Supply Chain Interruption” drill carried out just months before the Japan disaster had prepared SSMD and familiarised them with the right crisis management procedures, enabling their swift response. The combination of being proactive and consistent in its continuity drills aided SSMD to sail through the crisis with negligible business impact.



SSMC shared business continuity management experience in 2011 National Security Dialogue

Figure 25: SSMC's CSR Programs



## 6 Our Journey Ahead

As we continue our journey forward, the vision for SSMC is one that continues to excel and build on self-sufficiency and long term growth and sustainability. We will continue to harness innovative solutions to meet today’s high demands in environmental conservation. This will help us achieve our vision of being the best-in-class foundry services provider for NXP and TSMC customers.

In addition to lead our business excellence journey, SSMC will continue our efforts in corporate social responsibility and be the leader of sustainable cause. Green initiatives for preserving environment are in place to heighten green commitment and reduce our carbon footprints. Also, we are exploring various means including collaborations with other organizations and government bodies, to increase environmental awareness among our staff and our community partners.





## Systems on Silicon Manufacturing Company Pte Ltd

70 Pasir Ris Industrial Drive 1,  
Singapore 519527

Tel: (65) 6248 7000

Fax: (65) 6248 7606

[www.ssmc.com](http://www.ssmc.com)

© All rights reserved.

Materials may not be reproduced without prior permission from Systems on Silicon Manufacturing Company Pte Ltd.